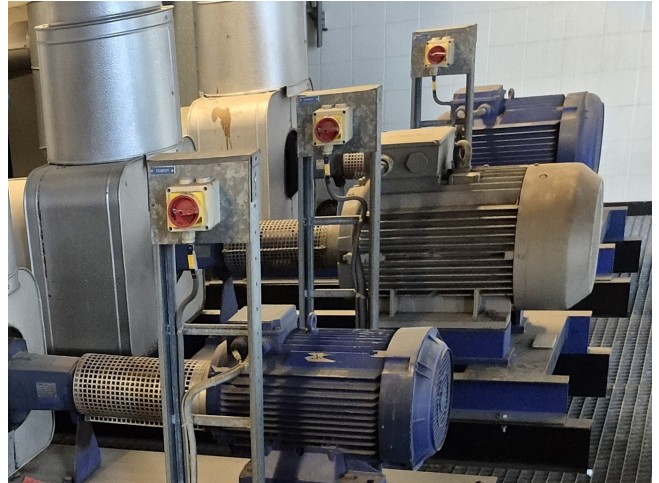


# KSB ETANORM 150-250 M7

## Specifications

Marka	KSB
Rodzaj	ETANORM 150-250 M7
Przepływ objętościowy Q 360,0 maks. (m <sup>3</sup> /h)	
Wysokość dostawy H 18,9 maks. (M)	
Moc maks. (kW)	30,0
Remarks	Y.o.b. 1994
Stock	1



## Description

### Used KSB ETANORM 150-250 M7

Used KSB ETANORM 150-250 M7 water pump with Rotor XC200LK04 electric motor - 50 Hz - 30,0 kW - 1465 RPM. The pump has the following specifications: Qmax: 360,0 m<sup>3</sup>/h - Hmax: 18,9 m - Pmax: 30,0 kW. Dimensions: 1700x670x940 mm (LxWxH).

